

# First Nations within the major forest regions of Manitoba

## Aspen Parkland / Grassland

Band Label	Band Name	Associated Reserves
4	Birdtail Sioux First Nation Band	Birdtail Creek 57 and Birdtail Haylands 57A
11	Dakota Plains First Nation Band	Dakota Plains 6A
12	Dakota Tipi Band	Dakota Tipi 1
14	Ebb and Flow Band	Ebb and Flow 52
18	Gamblers Band	Gambler 63
19	Garden Hill First Nation Band	Carry The Kettle Nakoda 76-28; Kawacatoose First Nation 88; Moosomin 112K; Muskowekwan 85-54 and 85-55; Ochapowace 71-28, 71-30, 71-31, 71-32, 71-33, 71-94, 71-129; Okanese 82L; Sakimay 74-5 and 74-16; Saulteaux First Nations 159 Ff; Sweetgrass 113-D33
24	Keeseekoowenin Band	Keeseekoowenin 61
26	Lake Manitoba Band	Dog Creek 46
31	Long Plain First Nation Band	Long Plain 6
42	Oak Lake First Nation Band	Canupawakpa Dakota and Oak Lake 59A
45	Peguis Band	Peguis 1D, 1E, 1F and 1G; St. Peters Fishing Station 1A
49	Rolling River Band	Rolling River 67
50	Roseau River Anishinabe First Nation Government	Roseau Rapids 2A and Roseau River 2 and 2B
52	Sandy Bay First Nation Band	Sandy Bay 5
57	Sioux Valley First Nation Band	Sioux Valley Dakota Nation
61	Swan Lake First Nation Band	Indian Gardens 8; Swan Lake 7 and 8A
65	Waywayseecappo First Nation Treaty Four 1874 Band	Waywayseecappo First Nation

## Carolinian / Great Lakes

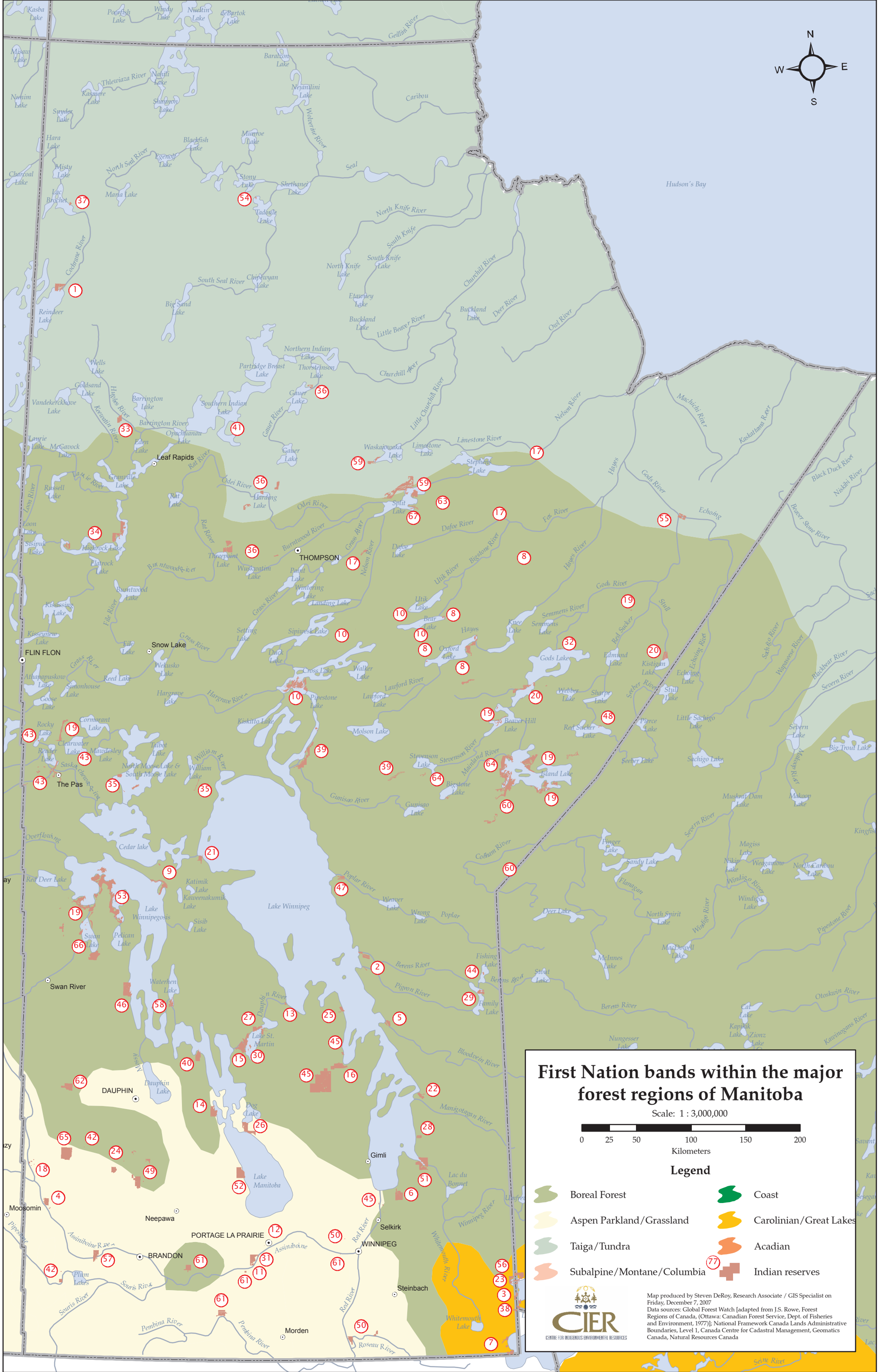
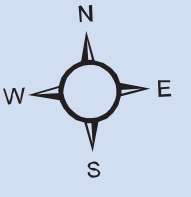
Band Label	Band Name	Associated Reserves
3	Big Island First Nation	Shoal Lake 31J
7	Buffalo Point First Nation Band	Buffalo Point 1, 2, 3 and 36; Reed River 36A
23	Iskutewisakaygun #39 Independent First Nation	Shoal Lake 39A
38	Northwest Angle #37 First Nation	Northwest Angle 34C, 37B and 37C; Shoal Lake 34B1 and 37A
56	Shoal Lake #40 First Nation	Shoal Lake 40

## Taiga / Tundra

Band Label	Band Name	Associated Reserves
1	Barren Lands Band	Brochet 197
17	Fox Lake Band	Fox Lake East 2
33	Marcel Colomb First Nation Band	Black Sturgeon
36	Nisichawayasihk Cree Nation Band	Kapawasihk; Opekunosakakanihk; Wapasihk; and Wuskwi Sipi
37	Northlands Band	Lac Brochet 197A
41	O-Pipon-Na-Piwin Cree Nation Band	O-Pipon-Na-Piwin Cree Nation 1
54	Sayisi Dene First Nation Band	Churchill 1
55	Shamattawa First Nation Band	Shamattawa 1
59	Split Lake Cree First Nation Band	Split Lake 171

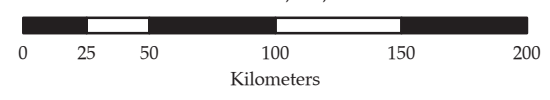
## Boreal Forest

Band Label	Band Name	Associated Reserves
2	Berens River Band	Berens River 13 and Pigeon River 13A
5	Bloodvein Band	Bloodvein 12
6	Brokenhead Ojibway Nation Band	Brokenhead 4
8	Bunibonibee Cree Nation Band	Oxford House 24, 24A, 24B, 24C and 24D
9	Chemawawin Cree Nation Band	Chemawawin 1, 2 and 3
10	Cross Lake Band	Cross Lake 19, 19A, 19B, 19C, 19D, 19E, 19X01, 19X02, 19X03, 19X05 and 19X06; Whiskey Jack
13	Dauphin River Band	Dauphin River 48A
14	Ebb and Flow Band	Ebb and Flow 52
15	Faford Band	Faford 50
16	Fisher River Band	Fisher River 44 and 44A
17	Fox Lake Band	Fox Lake 1 and Fox Lake West 3
19	Garden Hill First Nation Band	Amik Wachink Sakahikan; English River First Nation Barkwell Bay 192I; English River First Nation Flatstone Lake 192L; English River First Nation Haultain Lake 192K; Garden Hill First Nation; Kistapinan 211; Kistapinânihk 231; Mckay 209; Pelican Rapids Access Road Phase 1 ; Pe-Ta-Waygamak; Red Cross Lake North ; Roadside 165F; Root Lake Beach Ridge Site ; Saulteaux 159Ee; Saulteaux 159Ii; Seeseep Sakahikan; Weshia Kijay Wasagamach; and Yellow Quill 90-18
20	God's Lake Narrows Band	Andrew Bay; Chataway Lake/Knife Lake; God'S Lake 23; North Prominent Ridge and Vermilyea Lake
21	Grand Rapids First Nation Band	Grand Rapids 33
22	Hollow Water First Nation Band	Hollow Water 10
24	Keeseekoowenin Band	Bottle Lake 61B and Clear Lake 61A
25	Kinonjeoshtegon Band	Jackhead 43 and 43A
27	Lake St. Martin Band	The Narrows 49 and 49A
28	Little Black River Band	Black River 9
29	Little Grand Rapids Band	Little Grand Rapids 14
30	Little Saskatchewan Band	Little Saskatchewan 48 and 48B
32	Manto Sipi Cree Nation Band	God'S River 86A
34	Mathias Colomb Band	Highrock 199 and Pukatawagan 198
35	Mosakahiken Cree Nation Band	Moose Lake 31A, 31C, 31D, 31G and 31J
36	Nisichawayasihk Cree Nation Band	Monahawuhkan; Nelson House 170, 170A, 170B and 170C
39	Norway House Band	Norway House 17, 17A and 17B; Ponask Lake
40	O-Chi-Chak-Ko-Sipi First Nation Band	Crane River 51
42	Oak Lake First Nation Band	Fishing Station 62A
43	Opaskwayak Cree Nation Band	Opaskwayak Cree Nation 21 (Stony Point), 21A, 21B, 21C, 21D, 21E, 21F, 21G, 21I, 21J, 21K, 21L, 21N and 21P; Root Lake 231; Salt Channel 21D
44	Pauingassi First Nation	Pauingassi
45	Peguis Band	Peguis 1B, 1C, 1G, 1H and 1I
46	Pine Creek Band	Pine Creek 66A
47	Poplar River First Nation Band	Poplar River 16
48	Red Sucker Lake Band	Red Sucker Lake 1976
49	Rolling River Band	Rolling River 67, 67A and 67B
51	Sagkeeng/Fort Alexander First Nation Band	Fort Alexander 3
53	Sapotaweyak Cree Nation Band	Sapotaweyak Cree Nation - Spruce Island and Sapotaweyak Cree Nation; Shoal River 65A, 65B and 65F
58	Skownan First Nation Band	Waterhen 45
59	Split Lake Cree First Nation Band	Split Lake 171, 171A and 171B
60	St. Theresa Point Band	Cantin Lake; Mukwa Narrows; and St. Theresa Point
61	Swan Lake First Nation Band	Swan Lake 7A
62	Tootinaowaziibeeng Treaty Reserve Band	Valley River 63A
63	War Lake Band	Mooseocoot
64	Wasagamack Band	Feather Rapids; Naytawunkank; and Wasagamack
66	Wuskwi Sipiik Band	Swan Lake 65C; Wuskwi Sipiik 1, 2, 3A, 3B, 3C, 3D, 3E, 3F, 4, 5, 6 and 7
67	York Factory First Nation Band	York Landing



### First Nation bands within the major forest regions of Manitoba

Scale: 1 : 3,000,000



#### Legend

- Boreal Forest
- Aspen Parkland/Grassland
- Taiga/Tundra
- Subalpine/Montane/Columbia
- Coast
- Carolinian/Great Lakes
- Acadian
- Indian reserves



Map produced by Steven DeRoy, Research Associate / GIS Specialist on Friday, December 7, 2007  
Data sources: Global Forest Watch [adapted from J.S. Rowe, Forest Regions of Canada, (Ottawa: Canadian Forest Service, Dept. of Fisheries and Environment, 1977)]; National Framework Canada Lands Administrative Boundaries, Level 1, Canada Centre for Cadastral Management, Geomatics Canada, Natural Resources Canada